

# season

While this Sydney house was lovely, the new owners wanted it to work all year round...

# to taste

## cheat sheet

**Who lives here** Liz, a property consultant; her husband Pat, a psychologist; their two children, aged 8 and 10; and Tamaruke puppy Charlie.

**Style of home** A California bungalow with a contemporary two-storey extension that equates to 200 square metres of space in Sydney's inner west.

**🕒** Liz and Pat bought the four-bedroom house at the end of 2012, eight years after the previous owners added the extension. They landscaped the outdoor areas in 2015 and, two years later, hired Studio Gorman for the cosmetic renovation, which was completed in April 2018.

**\$\$\$** \$550,000 (including furniture).

**KITCHEN** The design revolves around a pair of Yuta Badayala pendant lamps from Koskela. "I like the earthy tones, and the fact that they're not identical," says Liz. Timber cupboards in Evener Almond. Benchtop and splashback, Caesarstone Rugged Concrete. Stools, Cult.





**W**hy is it that so many people living in Australia persist with the myth that it is always summer here? Granted, the climate in this part of the world is measurably better than in many other places. But still, we get winter. Why else would this be the birthplace of the Ugg boot? None of this comes as a surprise to Liz and Pat, whose renovation in the Sydney suburb of Annandale gave them a house for all seasons.

The property had already been through a major transformation courtesy of the previous owners, who added a two-storey extension to the rear of the original California bungalow. “They did a lot of hard work and it was very nice, so the bones of the house were there,” says Liz. “What we’ve done is mostly aesthetic.”

They tackled the exterior first, enlisting Tim Samuel Design to tame the wilderness with landscaping and, later, by incorporating a swimming pool. “We live really close to the school, so people drop in,” says Liz, who’s mum to two children. “On the last day of term, we must have had 11 little boys in the water. Then, when the kids go to bed, I’ll jump in and have a glass of wine and look up at the night sky.”

When their focus turned indoors, Liz stumbled across the interior designer of her dreams when Suzanne Gorman – owner of Studio Gorman – appeared in a magazine story featuring her own home. “I loved everything about it,” Liz sighs. “I’d have been happy if she just picked up her house and transplanted it here!”

Instead, Suzanne and her team (including builder Andy Bishop from Arthouse Projects) worked with Liz and Pat to adapt the house to their needs, adding elements to complement their existing furniture. Pat had his heart set on a fireplace, so together they found space for one by losing the toilet and basin from the laundry, which allowed the living space to expand. “We just love it,” says Liz. “In winter, whoever gets up first turns it on and the warmth travels through the whole house.”

The only other structural change was raising the height of a few dividing walls, to make the ground floor less open-plan.

“The kitchen was previously under the stairs. Moving it allowed us to design a bigger, more bespoke space that connects better to the backyard. The entire house flows a lot better now”

SUZANNE GORMAN, INTERIOR DESIGNER

”

### bright idea

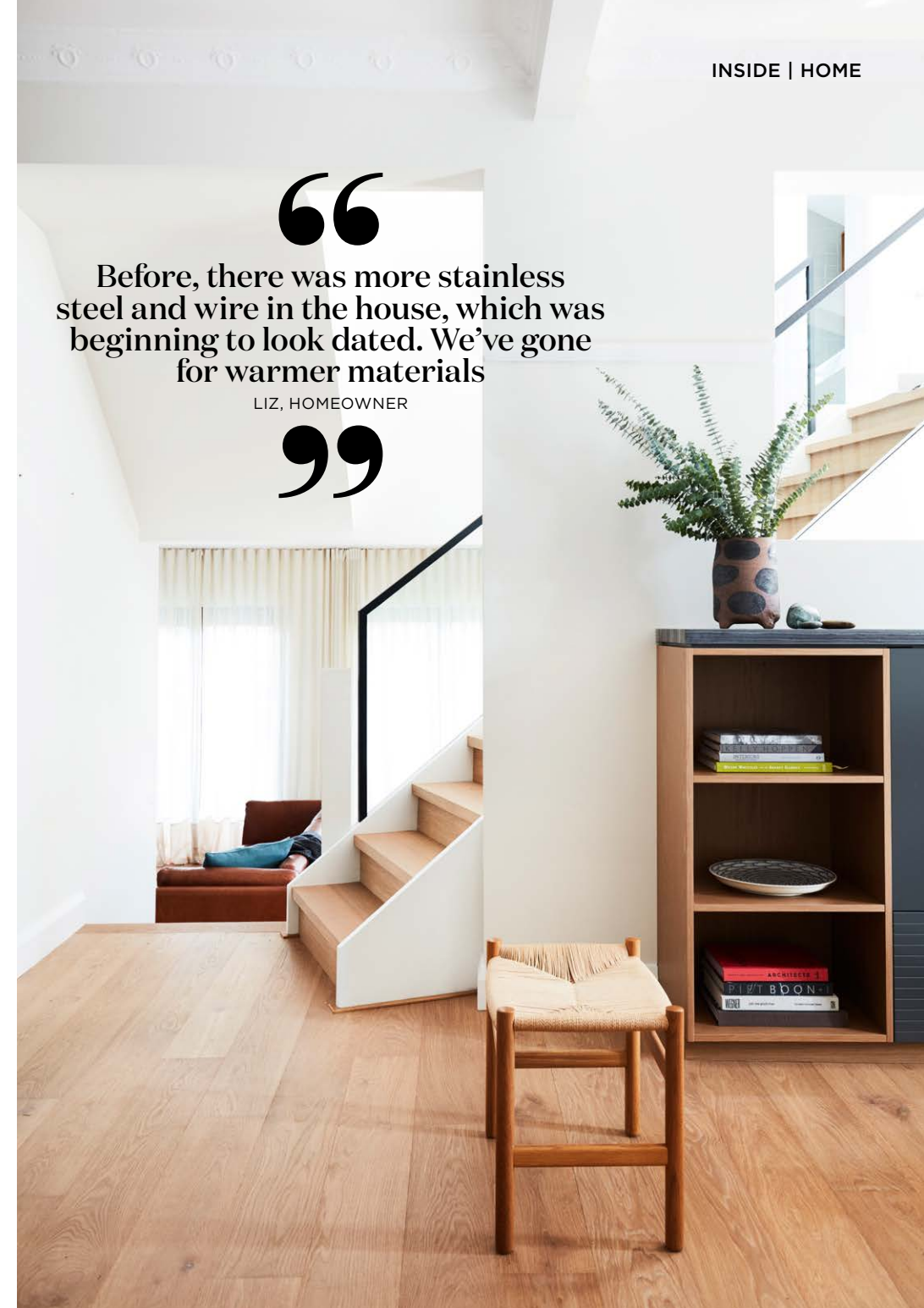
Liz and Pat chose a single extra-wide glass door for entry to the side courtyard. As well as maximising the light, the similarly oversized bronze handle by Designer Doorware from ADH Studio adds interest.

**DINING AREA (this page and opposite left)** Fitting the eating area under the stairs near the window was a masterstroke. Table, clients’ own. Nau ‘Molloy’ chairs, Cult.

**LIVING (opposite right)** Looking towards the cabinetry is a new Arthur G ‘Harry’ sofa and Winston chair from Jardan.



**FORMAL LIVING (both pages)** Everything from the TV to stacks of Lego are concealed behind custom joinery in Evener Almond, painted Dulux Western Myall and topped with a honed slab of CDK Stone's Noir Grigio. Sofa and artworks, pre-existing. Carl Hansen & Son 'CH53' stool, Cult. The patchwork of flooring that the family inherited has been replaced with Haywoods Oak Fortress throughout.



“ Before, there was more stainless steel and wire in the house, which was beginning to look dated. We’ve gone for warmer materials

LIZ, HOMEOWNER

”

The result is two separate living spaces that can be used at the same time. Even more inviting, the TVs in both are hidden behind joinery when not in use. “That was an idea Pat and I had,” says Liz. “It’s so much nicer to draw attention to the books and accessories instead, especially when you have people over.”

Beyond that, the project was all about adding texture and layers. “Before, there was more stainless steel and wire in the house, which was beginning to look dated,” says Liz. “We went for warmer materials.” The custom leather handrails on the stairway is a perfect example – and a treat every time you touch them.

Meanwhile, the bedrooms were softened with clever wallpaper and curtain combinations, and unexpected light fittings. “That’s why you use an interior designer,” says Liz. “You can renovate yourself and do quite a nice job, but someone like Suzanne will encourage you to make bolder choices, like putting different materials and patterns together.”

At the same time, Liz admits this was where they went over budget. “Sometimes you’d think, ‘Why are we putting a leather trim on the bloody balustrade?’ But those are the details you look at every day and love,” she says. “We probably went about \$50,000 over, but that was our choice. Let’s up-spec. Let’s buy the mature trees. Let’s get the black Fenix Niro Ingo cupboards because they don’t show fingerprints. It was worth it. We haven’t regretted anything we’ve done, but I was definitely surprised at how much a renovation can end up costing.”

Now that the work is finished, Pat says he’s never moving. In the summer, he’s happiest outside at the helm of the barbecue while the kids splash in the pool. On winter evenings, he can be found by the fire with a glass of something from his bar nook in the living area. “We love what our home has to offer across the seasons,” says Liz. “We wouldn’t change a thing.” **LD**  
To see more of Suzanne Gorman’s work, visit [studiogorman.com](http://studiogorman.com)

**GREAT FINDS**

**surprise elements**

Mix old and new pieces with an infusion of eclectic choices in complementary colours



**FROM LEFT** Harry sofa in Settler Tapa, \$7030, Arthur G. **Pendant light** by Julie Djulibling Malibirr, \$900, Koskela. Dulux Wash&Wear **paint** in Western Myall, \$48.55 per L, Bunnings. Missoni Home ‘Masuleh #156’ **cushion**, \$376, Spence & Lyda. Rugged Concrete **surface**, \$900 per sq m, Caesarstone. Carl Hansen & Son ‘CH53’ **foot stool**, \$980, Cult.



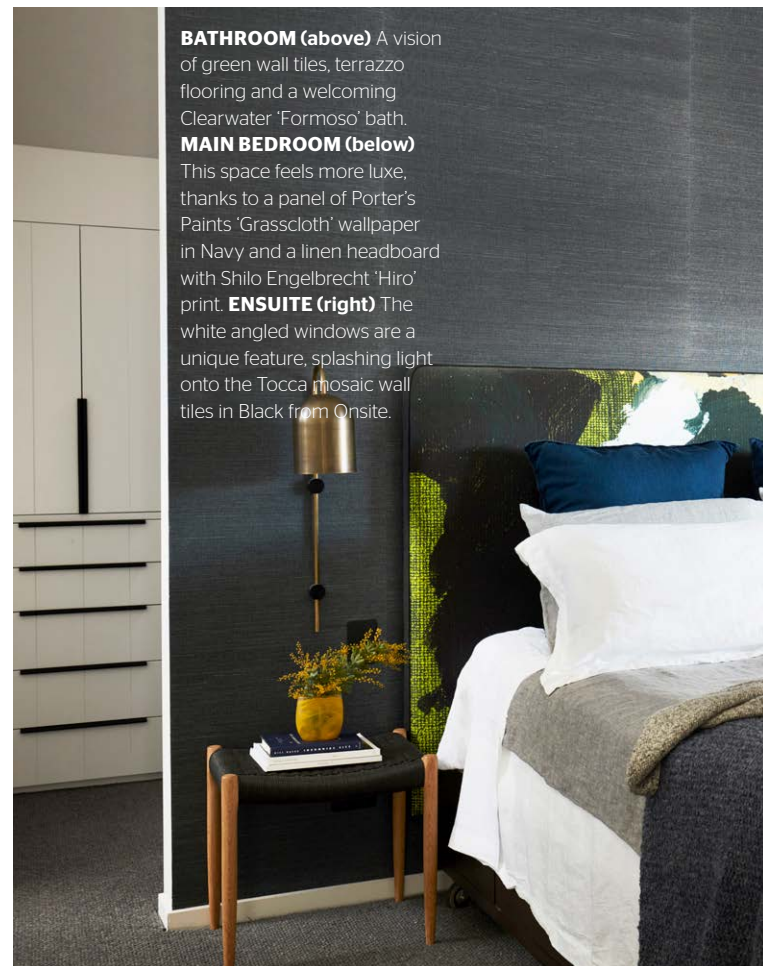
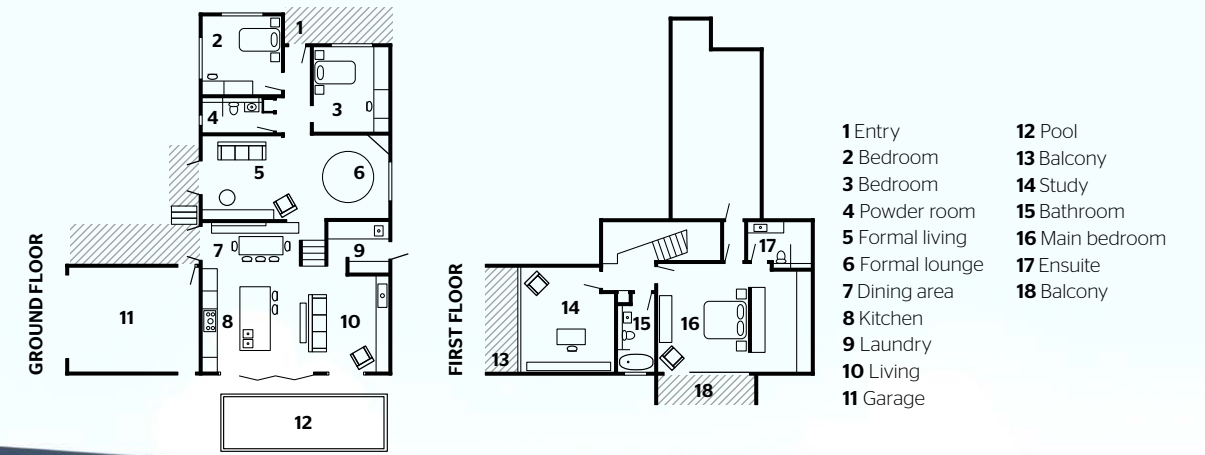


## LESSONS LEARNT

### “Our only mistake was attempting to live in the house while it was being renovated”

LIZ, HOMEOWNER

“We thought we could live downstairs while the tradesmen worked upstairs and then swap, but it was so dusty – and almost impossible for the builder with us there. We abandoned that plan six weeks in and took off to a furnished apartment.”



**BATHROOM (above)** A vision of green wall tiles, terrazzo flooring and a welcoming Clearwater ‘Formoso’ bath. **MAIN BEDROOM (below)** This space feels more luxe, thanks to a panel of Porter’s Paints ‘Grasscloth’ wallpaper in Navy and a linen headboard with Shilo Engelbrecht ‘Hiro’ print. **ENSUITE (right)** The white angled windows are a unique feature, splashing light onto the Tocca mosaic wall tiles in Black from Onsite.



ENSUITE, VANITY IN EVENER ALMOND AND TOP IN CAESARSTONE RUGGED CONCRETE. ENSUITE LIGHT, DOUGLAS & BEC. OUTDOOR FURNITURE, ECO OUTDOOR. YELLOW POT, ANNANDALE GARDEN CENTRE



**COURTYARD** To create a connection between the old and new sections of the house, the exterior woodwork was painted the same colour – Dulux Monument – across both. It goes well with the silver travertine pavers.